

# How Beautiful

Words and Music by  
Twila Paris

☞ **VERSE 1, 2 & 3**

F C/E B♭/D F/C



1. How beau - ti - ful the hands \_ that \_ served the  
 (2. How) beau - ti - ful the heart \_ that \_ bled, that  
 (3. How) beau - ti - ful the ra - diant \_ Bride who

5 B♭/D F/C Gm<sup>7</sup>/D C/E F



wine and the \_ bread and the sons \_ of the earth. How \_ beau - ti -  
 took all my \_ sin and \_ bore \_ it in - stead. How \_ beau - ti -  
 waits for her \_ Groom with His light \_ in her eyes. How \_ beau - ti -

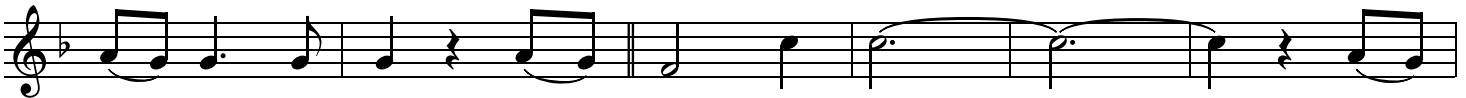
10 Am/E B♭/D F/C B♭/D F/C



-ful the feet \_ that \_ walked the long dust - y \_ roads and the  
 -ful the ten - der \_ eyes that chose to for - give and \_  
 -ful when hum - ble hearts \_ give the fruit of pure \_ lives so that

**CHORUS 1a**

15 B♭/D C/E C B♭ F/A B♭maj<sup>7</sup> C



hill \_ to the cross. How \_ beau - ti - ful, \_ \_ \_ \_ \_ how \_  
 nev - er de - spise.  
 oth - ers \_ may live.

21 B♭/D C/E Gm/F F C/E B♭/D C/E Last time to Coda ⊕  
 B♭/D



beau - ti - ful \_ \_ \_ \_ \_ how \_ beau - ti - ful \_ \_ \_ \_ \_ is the

1. **TURNAROUND 1** 2.

28 C/E F<sup>sus</sup> F C/E B<sup>b</sup>/D B<sup>b</sup> C/E

bod - y of Christ. \_\_\_\_\_ 2. How bod - y of

**BRIDGE**

34 F F/A G/B C<sup>sus</sup> C/B<sup>b</sup> F<sup>2</sup>/A

Christ. And as He laid down His life we of - fer \_ this

41 F/A B<sup>b</sup> F/A C C/B<sup>b</sup> F/A

sac - ri - fice that we will \_ live just as He died: \_

47 B<sup>b2</sup> F/A

Will - ing to \_\_\_\_\_ pay the price, \_

51 B<sup>b2</sup> D.S. al Coda

will - ing to \_\_\_\_\_ pay \_\_\_\_\_ the price. \_\_\_\_\_ 3. How

**⊕ Coda** **TURNAROUND 2** **VERSE 4**

56 C/E D<sup>sus</sup> D D<sup>sus</sup>/C D/C D/B D/A G

bod - y of Christ. \_\_\_\_\_ 4. How beau - ti -

62 G/B C G/B C G/B

-ful the feet that \_ bring \_ the sound of good \_ news and the

67 Cmaj<sup>7</sup> D D<sup>sus</sup>/E D/F# G Bm<sup>7</sup> C

love of the King. How beautiful the hands that

72 G/B C G/B Cmaj<sup>7</sup> D

serve the wine and the bread and the sons of the earth. How

CHORUS 1b

77 C G/B Cmaj<sup>7</sup> D C/E D/F# C/G D/G

beau - ti - ful, how beau - ti - ful,

ENDING

84 G D/F# C/E D/F# C/E D<sup>7sus</sup> G<sup>sus</sup> G

how beautiful is the bod-y of Christ.

91 D/F# C/E G/B Am<sup>7</sup> D<sup>sus</sup> D G

how beautiful is the bod-y of Christ.